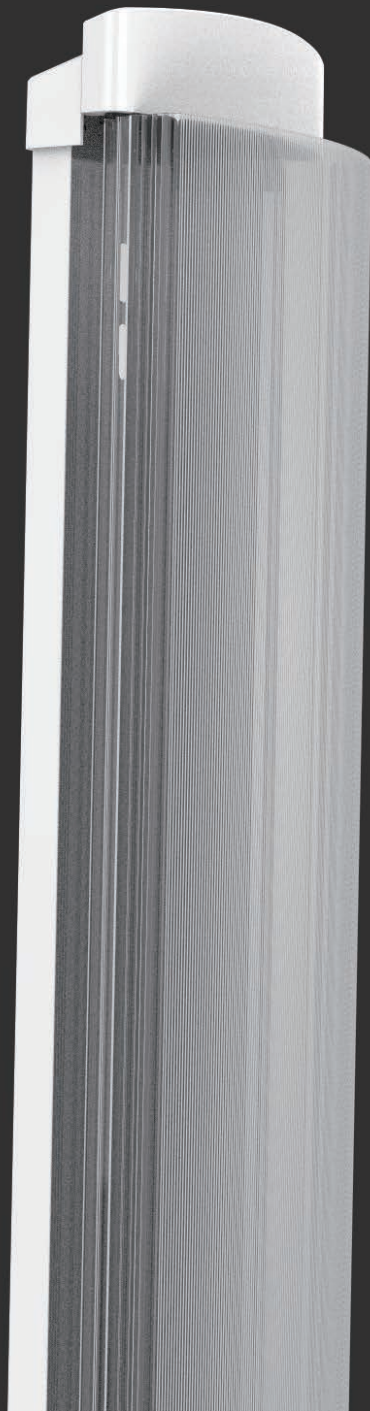
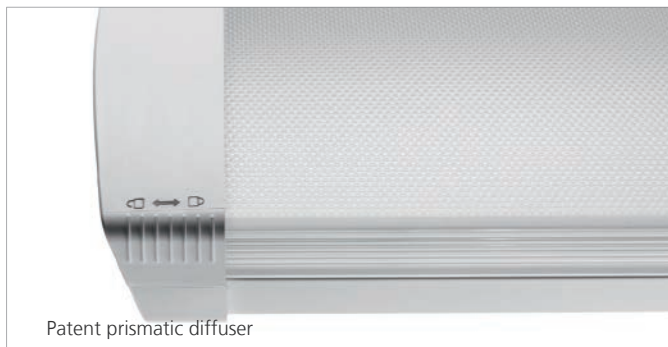


Linear Fixture L25





ERVAN linear luminaire L25 is a flexible and slim luminaire with IP44 for multiple indoor application such as parking garages, schools, offices, culverts, laundry rooms, kitchens and industrial buildings. It is suitable for surface mounted or wall mounted, rails bracket mounting, horizontal wires and wire suspension. Thanks to the fastener design of end cap, we can save 80% labor cost of installation.

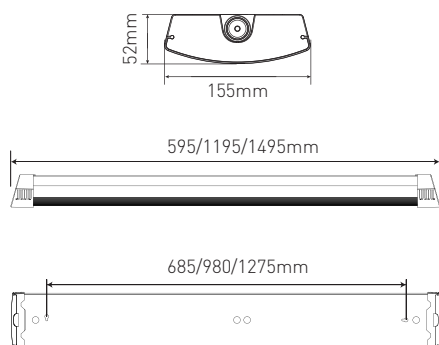


Parameter

Size	Wattage (Power adjustable)	Lumen (Transparent prismatic cover)	Efficiency (Transparent prismatic cover)	Lumen (Frost film)	Efficiency (Frost film)	CRI	CCT	SDCM
595mm	11/13/16/20W	1650~3000LM	150lm/w	1430~2600LM	130lm/w	80	4000K	3
1195mm	23/29/35/40W	3600~6400LM	160lm/w	3220~5600LM	140lm/w	80	4000K	3
1495mm	26/33/40/47W	4200~7500LM	160lm/w	3640~6580LM	140lm/w	80	4000K	3

Notes: Above lumens based on 4000K, Ra 80. All values in +25°C ambient temperature, luminous flux tolerance +-5%, output power tolerance +-5%.

Structure Data



Wiring: 5 wires through

Operation Temp: -20~40 °C

Material: White coating metal+PMMA prismatic diffuser

Installation: Surface mounted; Cable wire; Wire suspension;
Wall mounted

Protection: IP44/IK07

Terminal: 5x2.5mm² push-in terminal

Connection: One cable entry at the endcap and
two top entries at the back of the luminaire

Electrical Data

AC Input : 220-240V 50/60Hz

Philips Driver: PF≥0.9 THD<20%

20W : MCB B10A 40, MCB B16A 64, MCB C10A 40, MCB C16A 64

40W : MCB B10A 20, MCB B16A 32, MCB C10A 20, MCB C16A 32

47W : MCB B10A 15, MCB B16A 24, MCB C10A 15, MCB C16A 24

Driver lifetime up to 100000h /10% max failure @ Ta25°C

AC Input : 220-240V 50/60Hz

LiFud Driver: PF≥0.93 THD<15%

CCT Adjustable: 3000K 4000K 5000K

Power Adjustable: 600mm 11/13/16/20W

1200mm 23/29/35/40W

1500mm 26/33/40/47W

Lighting Data

Light Efficiency: up to160Lm/W

Lumen output: 1430lm -7500lm

Beam Angle: 110° (prismatic diffuser)

CCT Range: WW(3000K) NW(4000K) DW(5000K) CW(6500K)

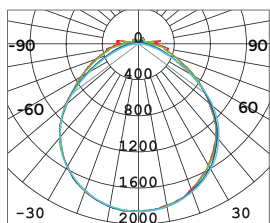
Light Source: 2835 SDCM 3 CRI > 80-95

L80B10 @Ta 25 °C : 102000h

L80B50 @Ta 25 °C : 118000h

L90B50 @Ta 25 °C : 58000h

Application



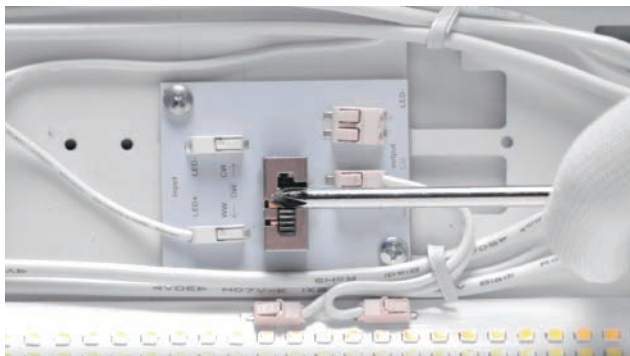
Prismatic diffuser

A wide beam angle with prismatic diffuser directs the light into the width of the room and is well suited for open layouts. Wide beam light distribution creates a uniform illumination with a very comfortable contact with the eyes at very low glare.



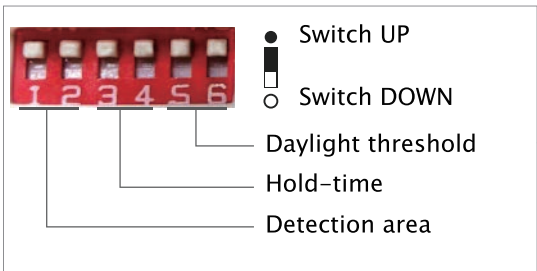
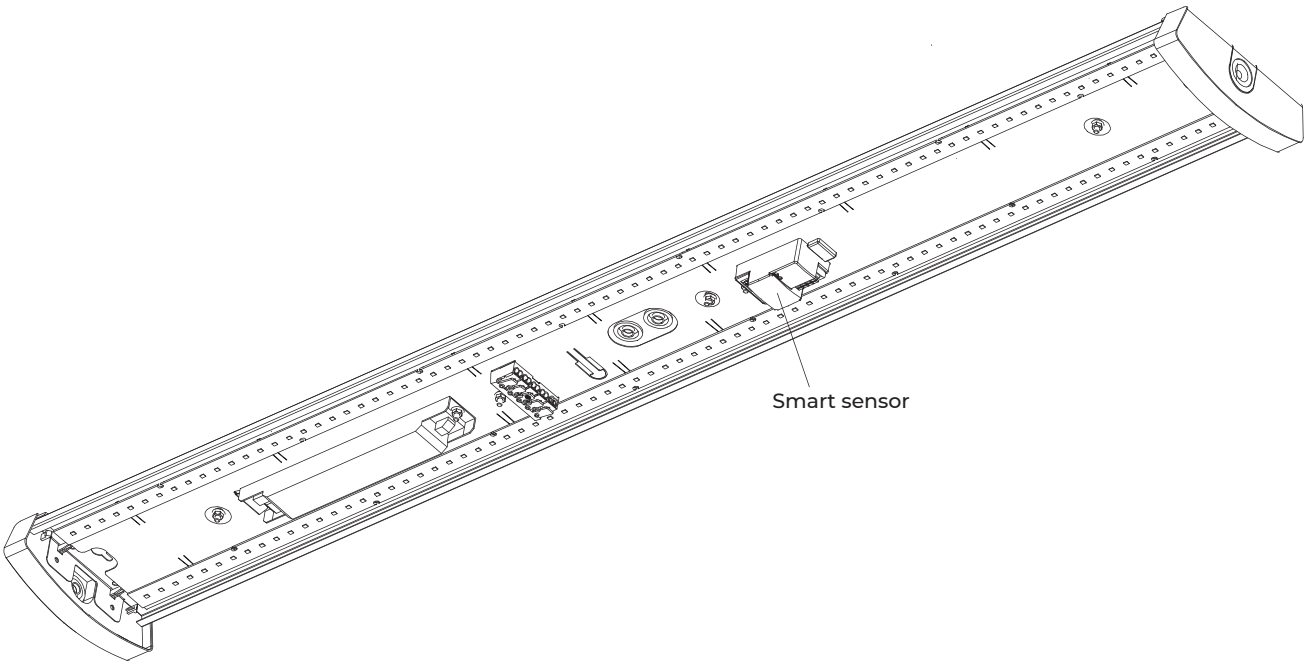
CCT&Power adjustable

CCT&Power adjustable function available on request makes the luminaire much more flexible to meet the needs for multiple application and minimizing inventory cost.



Smart solution

For a lot of application such as parking garages, classrooms, offices, culverts, laundry rooms, kitchens and industrial buildings, it's necessary to save the energy when there is absence of human to minimize the cost. ERVAN could perfectly offer different intelligent solutions according to the application with smart sensors and wireless technology.



1	2	
●	●	100%
○	●	75%
●	○	50%
○	○	10%

Detection area

In this area, movement will be detected and able to trigger the sensor. 100% detection area is also known as the strong sensitivity.

3	4	
●	●	5s
○	●	90s
●	○	5min
○	○	15min

Hold-time

The period of light keeping 100% brightness after moving objects leave the detection area.

5	6	
●	●	Disable
○	●	50lux
●	○	10lux
○	○	2lux

Daylight threshold

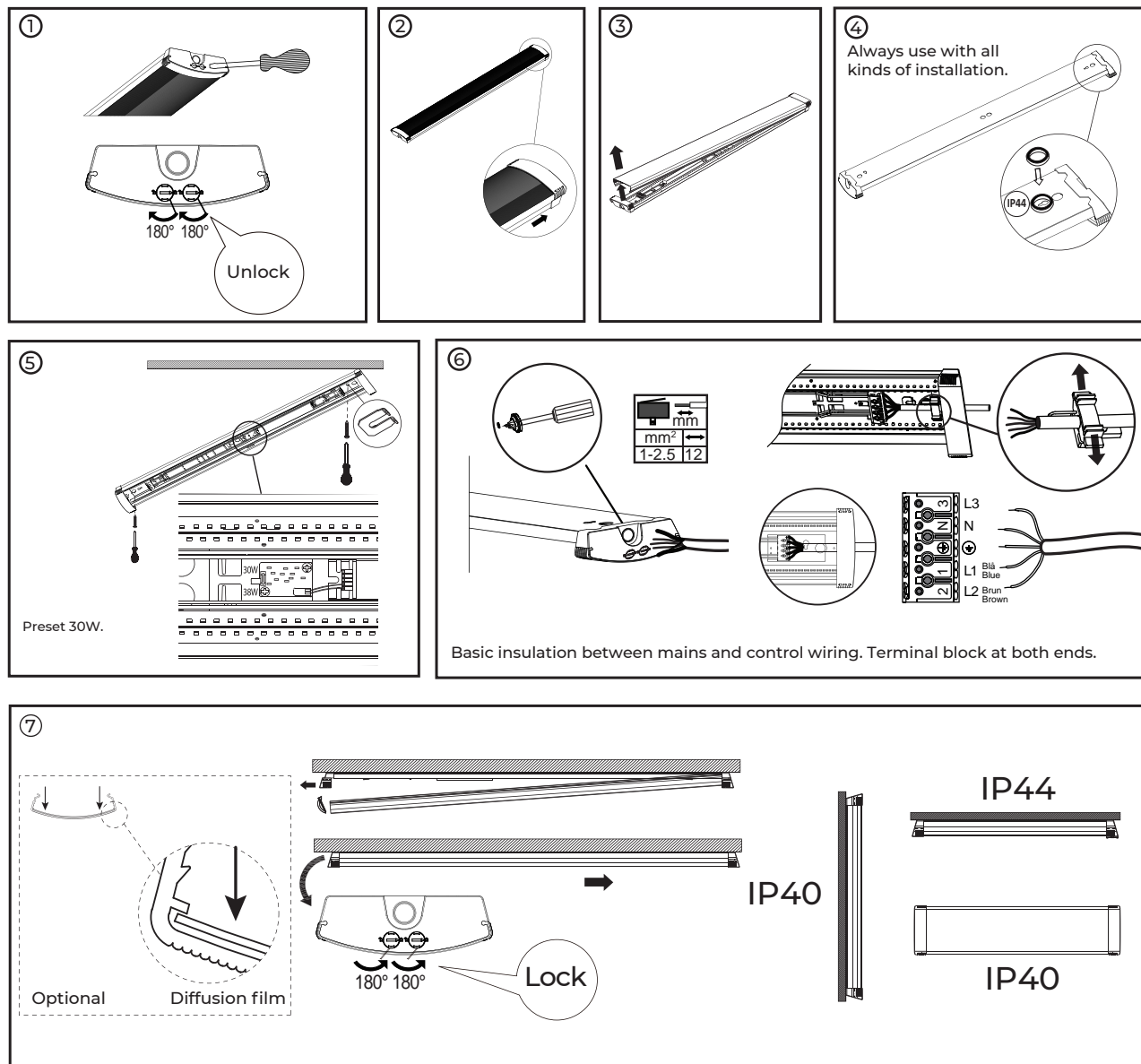
Definition of the ambient brightness; only when the ambient brightness is lower than the preset specific lux amount, the sensor will work; when it's preset as "disable", the sensor works everytime it detects motion regardless the ambient brightness.

Operation and connection

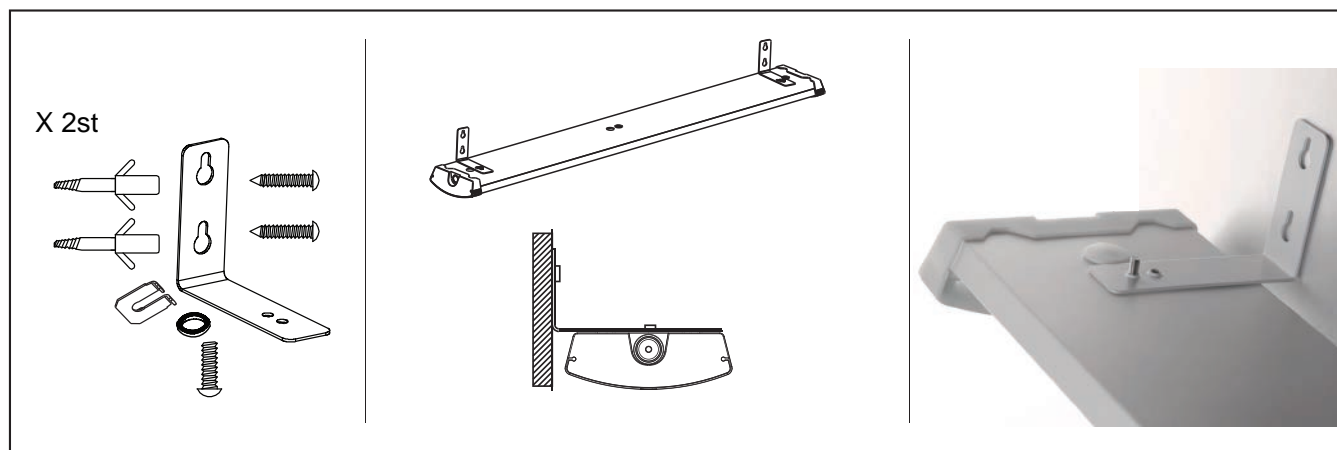
Openable linear fixture where the power cable is inserted in the 5 pole push-in terminal block via end plate.

5-pin terminals at each end facilitate installation when any existing cabling is to be used.

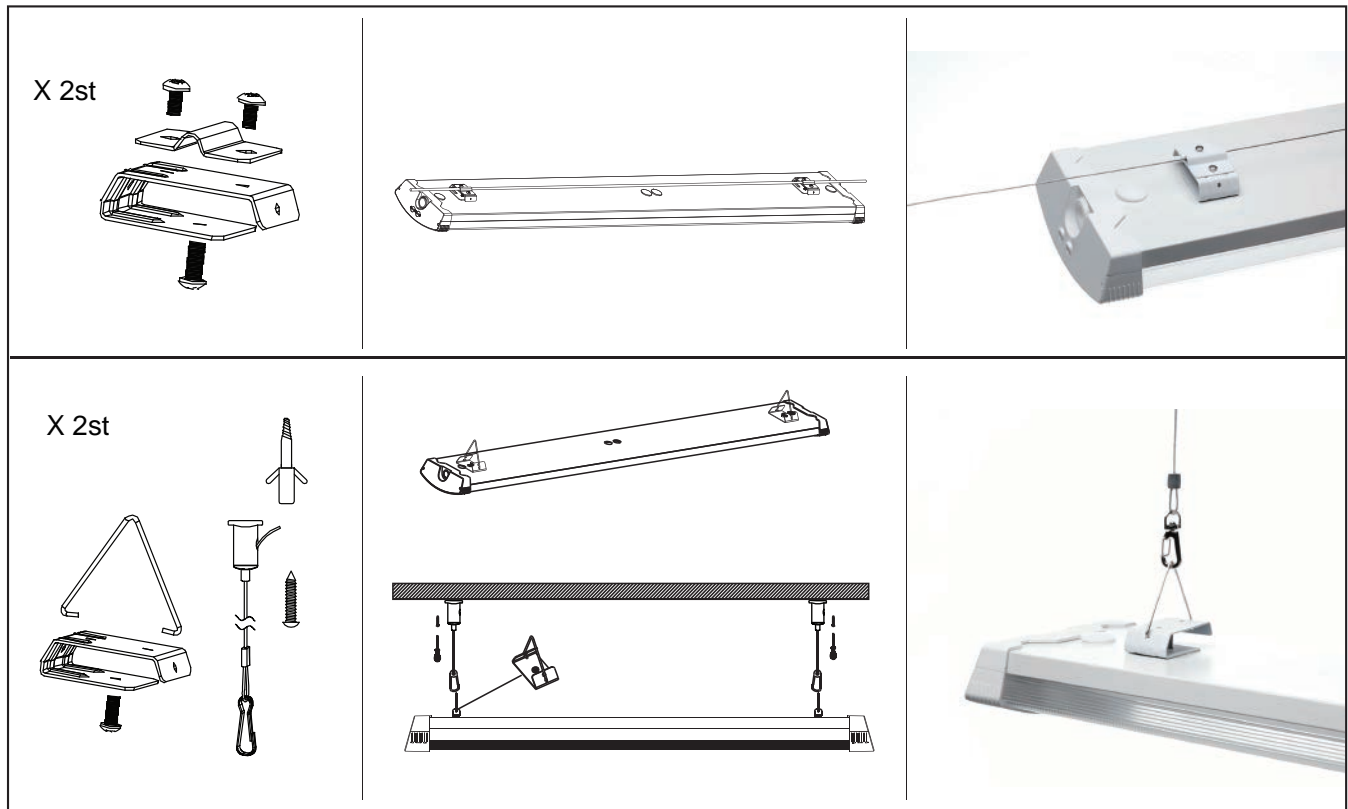
Cable entry at the endcap and top entries at the back of the luminaire both available.



OPERATION AND CONNECTION



Installation



Attention

This specification is for reference only, we reserve the right to change without notice. If you need the updated info, please contact local distributors or visit our website at <http://www.ervan.cn>

Any severe environment application including chemical substances, high/low temperature, high humidity, high salinity, high-ammonia etc.. is not permitted without the official confirmation from the manufacturer. If any misapplication happens, the warranty policy is no longer guaranteed.

ERVAN reserves the right of final explanation.